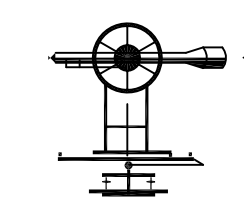


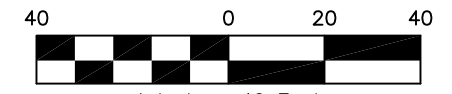
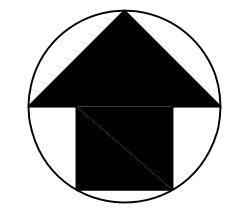
TOPOGRAPHIC SURVEY PROVIDED BY:
GARY G. ALLEN REGISTERED LAND SURVEYOR, INC.
 LB # 5509 LAND SURVEYING CIVIL ENGINEERING EB # 5509

4101 APALACHEE PARKWAY TALLAHASSEE, FLORIDA 32311
 PHONE : (850)-877-0541 email: GARYALLEN05@COMCAST.NET
 ©2010 - Gary G. Allen Registered Land Surveyor, Inc.



September 17, 2012 (16:56:03 EDT)
 C:\TEMP\ACR\FUEL51_32989\2735-006 LAYOUT.DWG

DESIGNED BY: S.R.W. DRAWN BY: S.R.W. CHECKED BY: S.K.M. SCALE: 1" = 50'			GENESIS GROUP FROM VISION TO REALITY GGI, LLC dba GENESIS GROUP 2507 CALLAWAY ROAD, SUITE 100 TALLAHASSEE, FLORIDA 32303 (850) 224-4400 (850) 681-3600 FAX www.GenesisGroup.com FL CA 00009660 FL LB 0006816 FL LC 26000202		PREPARED FOR LEON COUNTY FACILITIES MANAGEMENT		PROJECT NAME HUNTINGTON OAKS SITE REDEVELOPMENT		SHEET TITLE EXISTING CONDITIONS MAP		SEAL Sean K. Marston, P.E. License Number 55987		PROJECT NUMBER 2735-006 DATE 08/29/12 SHEET NUMBER 2	
NO.	DATE	DESCRIPTION	REVISIONS											



TREES TO REMAIN WITH PROTECTION

NUMBER	SIZE	SPECIES	STATUS	LIST	DEBIT/CREDIT
36	8"	WO	P	A	3
38	10"	WO	P	A	3
23	11"	WO	P	A	3
3	12"	LP	P	A	3
21	12"	WO	P	A	3
4	17"	LP	P	A	5
6	20"	LP	P	A	6
17	22"	LP	P	A	6
52	4"	LO	P	C	6
53	7"	LO	P	C	8
54	7"	LO	P	C	8
55	7"	LO	P	C	8
48	8"	LO	P	C	8
72	8"	LO	P	C	8
56	8"	LO	P	C	8
16	8"	LO	P	C	8
47	10"	LO	P	C	8
59	10"	LO	P	C	8
62	8"	LO	P	C	8
32	10"	LO	R	C	8
33	10"	LO	R	C	8
63	10"	LO	P	C	8
64	10"	LO	P	C	8
73	10"	LO	P	C	8
51	10"	LO	P	C	8
57	10"	LO	P	C	8
44	11"	LO	P	C	8
41	11"	LO	P	C	8
40	11"	LO	P	C	8
49	12"	LO	P	C	8
50	12"	LO	P	C	8
58	12"	LO	P	C	8
14	12"	LO	P	C	8
13	13"	LO	P	C	10
15	14"	LO	P	C	10
74	15"	LO	P	C	8
1	4"	DW	P	D	8

TOTAL DEBITS

NUMBER	SIZE	SPECIES	STATUS	LIST	DEBIT/CREDIT
11	4"	WO	R	A	2
25	10"	WO	R	A	4
43	13"	SG	R	A	6
12	15"	WO	R	A	6
2	18"	WO	R	A	6
76	3"	LO	R	C	8
80	4"	LO	R	C	8
66	4"	LO	R	C	8
78	6"	LO	R	C	8
70	7"	LO	R	C	10
9	8"	LO	R	C	10
65	8"	LO	R	C	10
77	8"	LO	R	C	10
18	8"	LO	R	C	10
34	9"	LO	R	C	10
46	9"	LO	R	C	10
60	10"	LO	R	C	10
61	10"	LO	R	C	10
79	10"	LO	R	C	10
68	10"	LO	R	C	10
67	10"	LO	R	C	10
10	10"	LO	R	C	10
8	12"	LO	R	C	10
45	12"	LO	R	C	10
71	12"	LO	R	C	10
42	13"	LO	R	C	12
75	14"	LO	R	C	12
69	14"	LO	R	C	12

TOTAL DEBITS

NUMBER	SIZE	SPECIES	STATUS	LIST	DEBIT/CREDIT
5	8"	WO	R	A	
7	6"	WO	R	A	
19	12"	WO	R	A	
20	12"	WO	R	A	
22	10"	WO	R	A	
24	10"	WO	R	A	
26	8"	WO	R	A	
27	14"	WO	R	A	
28	8"	WO	R	A	
29	13"	WO	R	A	
30	5"	WO	R	A	
31	6"	WO	R	A	
35	24"	SG	R	A	
37	14"	SG	R	A	
39	10"	WO	R	A	

TOTAL DEBITS 250

TOTAL DEBITS

NUMBER	SIZE	SPECIES	STATUS	LIST	DEBIT/CREDIT
11	4"	WO	R	A	2
25	10"	WO	R	A	4
43	13"	SG	R	A	6
12	15"	WO	R	A	6
2	18"	WO	R	A	6
76	3"	LO	R	C	8
80	4"	LO	R	C	8
66	4"	LO	R	C	8
78	6"	LO	R	C	8
70	7"	LO	R	C	10
9	8"	LO	R	C	10
65	8"	LO	R	C	10
77	8"	LO	R	C	10
18	8"	LO	R	C	10
34	9"	LO	R	C	10
46	9"	LO	R	C	10
60	10"	LO	R	C	10
61	10"	LO	R	C	10
79	10"	LO	R	C	10
68	10"	LO	R	C	10
67	10"	LO	R	C	10
10	10"	LO	R	C	10
8	12"	LO	R	C	10
45	12"	LO	R	C	10
71	12"	LO	R	C	10
42	13"	LO	R	C	12
75	14"	LO	R	C	12
69	14"	LO	R	C	12

TOTAL DEBITS

NUMBER	SIZE	SPECIES	STATUS	LIST	DEBIT/CREDIT
5	8"	WO	R	A	
7	6"	WO	R	A	
19	12"	WO	R	A	
20	12"	WO	R	A	
22	10"	WO	R	A	
24	10"	WO	R	A	
26	8"	WO	R	A	
27	14"	WO	R	A	
28	8"	WO	R	A	
29	13"	WO	R	A	
30	5"	WO	R	A	
31	6"	WO	R	A	
35	24"	SG	R	A	
37	14"	SG	R	A	
39	10"	WO	R	A	

TOTAL DEBITS

NUMBER	SIZE	SPECIES	STATUS	LIST	DEBIT/CREDIT
5	8"	WO	R	A	
7	6"	WO	R	A	
19	12"	WO	R	A	
20	12"	WO	R	A	
22	10"	WO	R	A	
24	10"	WO	R	A	
26	8"	WO	R	A	
27	14"	WO	R	A	
28	8"	WO	R	A	
29	13"	WO	R	A	
30	5"	WO	R	A	
31	6"	WO	R	A	
35	24"	SG	R	A	
37	14"	SG	R	A	
39	10"	WO	R	A	

LEGEND

APPROXIMATELY 42,760 SF OF EXISTING PAVEMENT TO BE SAW CUT AND REMOVED.

APPROXIMATELY 3,221 SF OF EXISTING CONCRETE CURB AND GUTTER TO BE SAW CUT AND REMOVED.

EXISTING TREE TO BE REMOVED. ALL TREES WITHIN THE CONSTRUCTION AREA THAT ARE NOT DESIGNATED FOR REMOVAL SHALL REMAIN WITH PROTECTION.

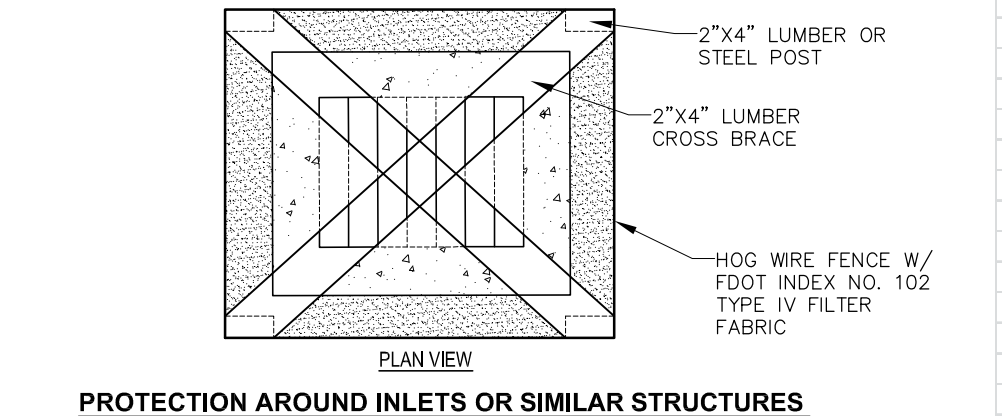
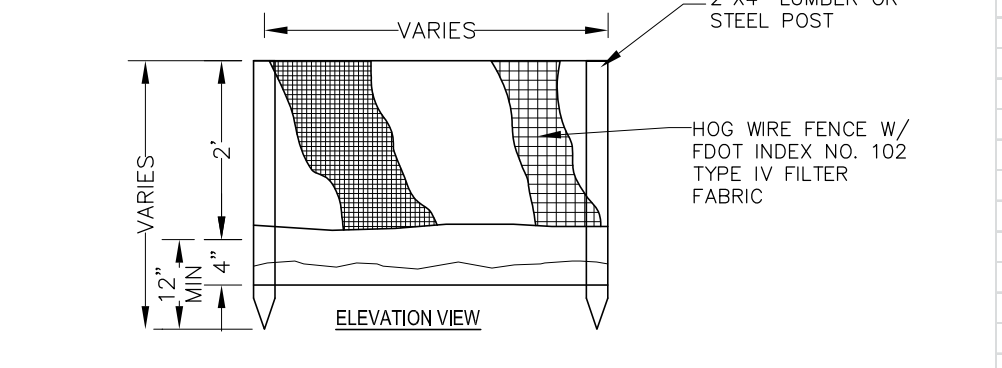
EXISTING TREE DESIGNATED AS DISEASED BY THE COUNTY ARBORIST. TREE SHALL BE REMOVED WITH NO DEBITS ASSOCIATED.

TREE LEGEND

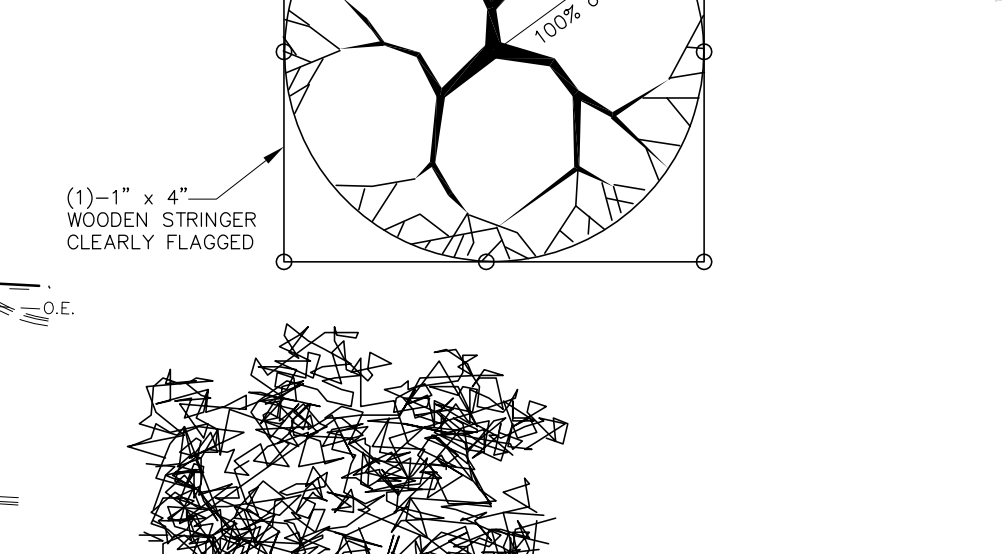
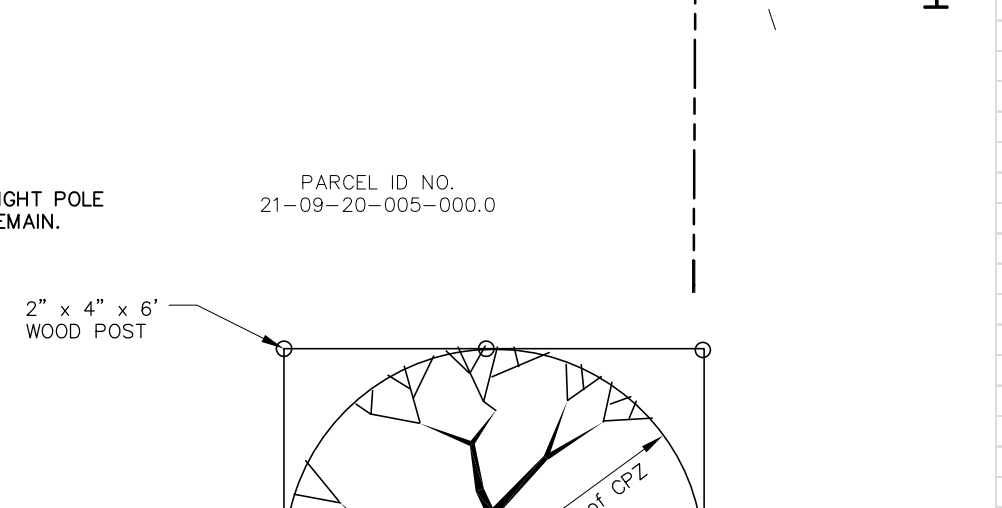
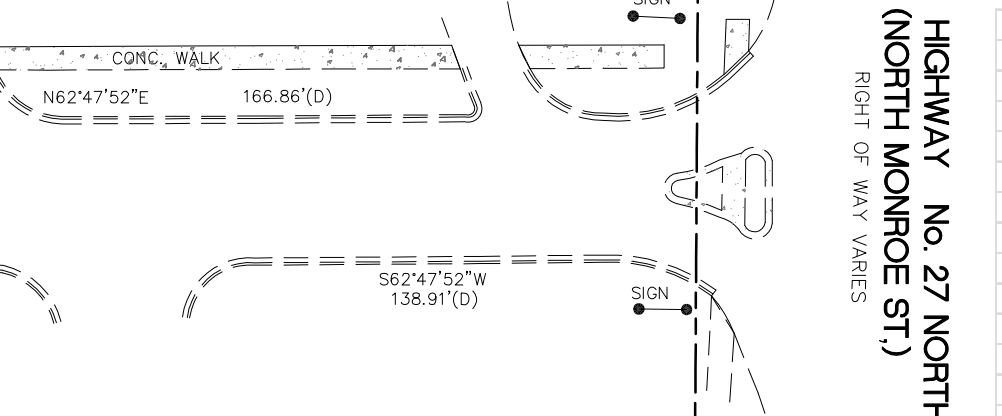
DW	-	DOGWOOD
LO	-	LIVE OAK
LP	-	LOBLOLLY PINE
SG	-	SWEETGUM
WO	-	WATER OAK

GENERAL NOTES:

1. ANY PROPOSED CONSTRUCTION WITHIN THE CPZ OF ANY TREE SHALL IN EFFECT CAUSE THE TREE TO BE REMOVED UNLESS A CERTIFIED ARBORIST CAN RECOMMEND ANY MITIGATION TO SAVE THE IMPACTED TREE. THE CONTRACTOR SHALL BE RESPONSIBLE FOR TREE REPLACEMENT AS PER CITY OF TALLAHASSEE ENVIRONMENTAL ORDINANCE SEC. 2-83. TREE PROTECTION AND REMOVAL STANDARDS FOR ANY TREE DEEMED TO BE REMOVED.
2. ANY IMPACTED TREE THAT HAS BEEN RECOMMENDED TO BE SAVED BY A CERTIFIED ARBORIST SHALL BE MITIGATED IN ACCORDANCE WITH THE CITY OF TALLAHASSEE ENVIRONMENTAL ORDINANCE SEC. 2-83 (a)(d). ARBORICULTURAL MITIGATION.
3. NO TRENCHING OR EXCAVATION SHALL BE ALLOWED WITHIN THE CPZ OF PROTECTED TREES, EXCEPT WHERE DEBITS HAVE BEEN NOTED ON PLANS.
4. ALL EXISTING SURFACE FEATURES WITHIN THE LIMITS OF CONSTRUCTION TO REMAIN UNLESS OTHERWISE NOTED.
5. THE CONTRACTOR SHALL ENSURE THAT A FOREMAN OR SUPERVISOR WHO HAS BEEN CERTIFIED UNDER FLORIDA STORMWATER, EROSION AND SEDIMENTATION CONTROL INSPECTOR TRAINING PROGRAM IS AVAILABLE IN PERSON OR BY PHONE AT ALL TIMES DURING THE CONSTRUCTION ACTIVITIES.
6. THE NAME AND PHONE NUMBER OF THE AFORESAID INSPECTOR SHALL BE PROVIDED TO THE CITY OF TALLAHASSEE'S ENVIRONMENTAL INSPECTOR AT THE PRE-CONSTRUCTION MEETING.
7. ADDITIONAL SEDIMENT AND EROSION CONTROL MEASURES MAY BE REQUIRED, DURING ANY PHASE OF DEVELOPMENT, AT THE DISCRETION OF THE CITY OF TALLAHASSEE'S ENVIRONMENTAL INSPECTOR.
8. ALL DISTURBED AREAS TO BE LEFT IDLE LONGER THAN 14 DAYS MUST BE STABILIZED WITH QUICK GROWING GRASS SEED AND MULCH.
9. GENSS GROUP HAS NOT VERIFIED THE ACCURACY OF THE EXISTING SURFACE FEATURES OR UNDERGROUND UTILITIES. THE CONTRACTOR IS TO FIELD VERIFY LOCATIONS AND SIZES OF ALL SURFACE FEATURES AND UNDERGROUND UTILITIES PRIOR TO DEMOLITION ACTIVITIES. THE CONTRACTOR SHALL CONTACT THE ENGINEER OF RECORD WITH ANY DISCREPANCIES PRIOR TO COMMENCING WITH CONSTRUCTION.
10. ALL EXISTING UTILITY AND STORM STRUCTURE AND FITTING TOPS TO REMAIN SHALL BE ADJUSTED TO MATCH FINISHED GRADE ELEVATIONS.

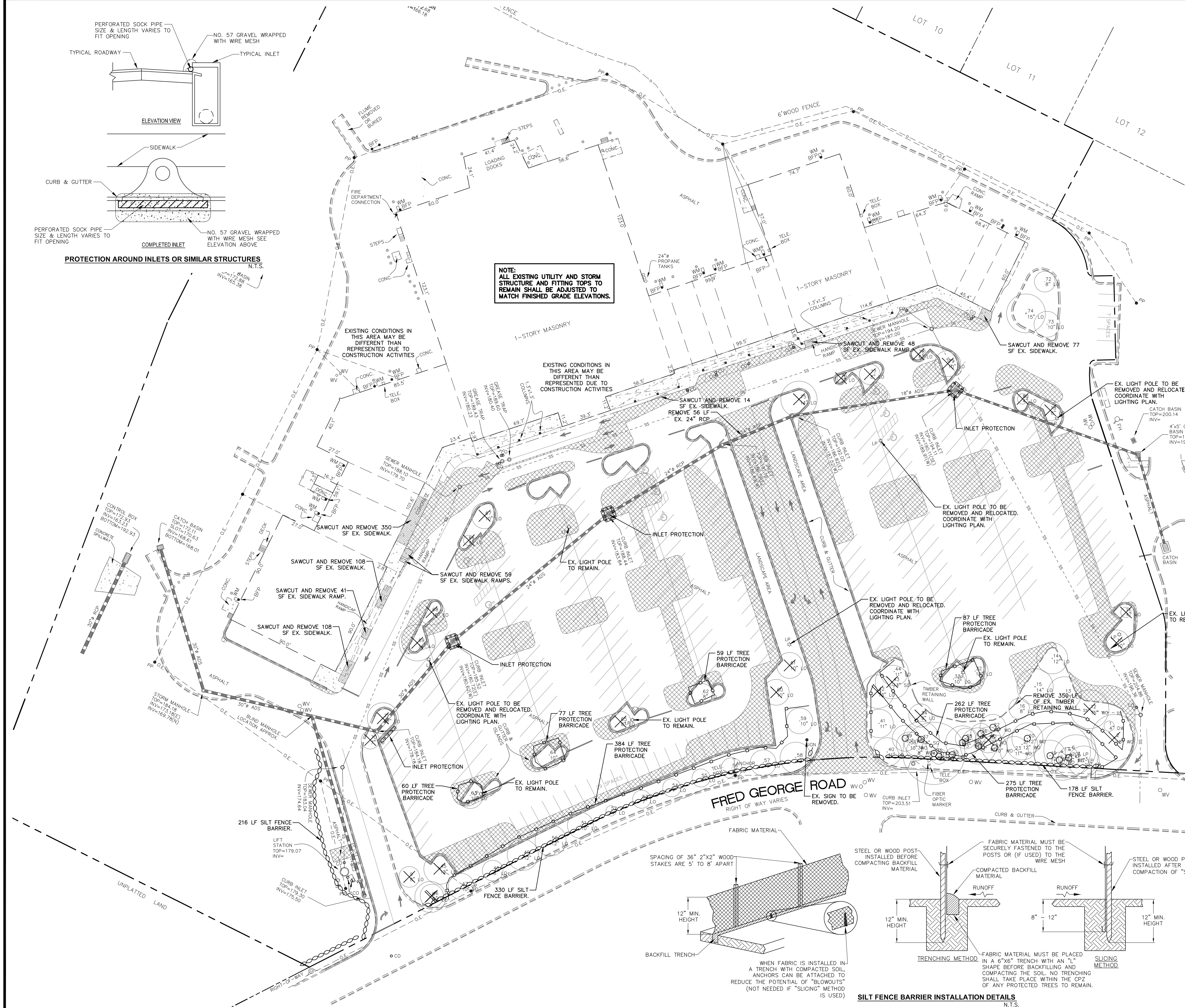


PROTECTION AROUND INLETS OR SIMILAR STRUCTURES
N.T.S.



TREE PROTECTION BARRIAGE
N.T.S.

NOTE: THE TREE PROTECTION BARRIAGE SHALL BE PLACED SO AS TO PROTECT AS MUCH OF THE PROTECTED TREES' CRITICAL PROTECTION ZONE CPZ AS POSSIBLE. THE CPZ EQUALS A CIRCLE DESCRIBED ABOUT THE CENTER OF THE TREE HAVING A RADIUS OF 1' FOR EVERY INCH OF TRUNK DIAMETER AT BREAST HEIGHT (DBH).



DESIGNED BY: **S.R.W.**
DRAWN BY: **S.R.W.**
CHECKED BY: **S.K.M.**
SCALE: **1" = 40'**

GENESIS GROUP
FROM VISION TO REALITY
GGI, LLC dba GENESIS GROUP
2507 CALLAWAY ROAD, SUITE 100
TALLAHASSEE, FLORIDA 32303
FL CA 00009660
FL LB 0006816
FL LC 26000202
(850) 224-4400 (850) 681-3600 FAX
www.GenesisGroup.com

PREPARED FOR
LEON COUNTY FACILITIES MANAGEMENT
LEON COUNTY
FLORIDA

PROJECT NAME
HUNTINGTON OAKS SITE REDEVELOPMENT

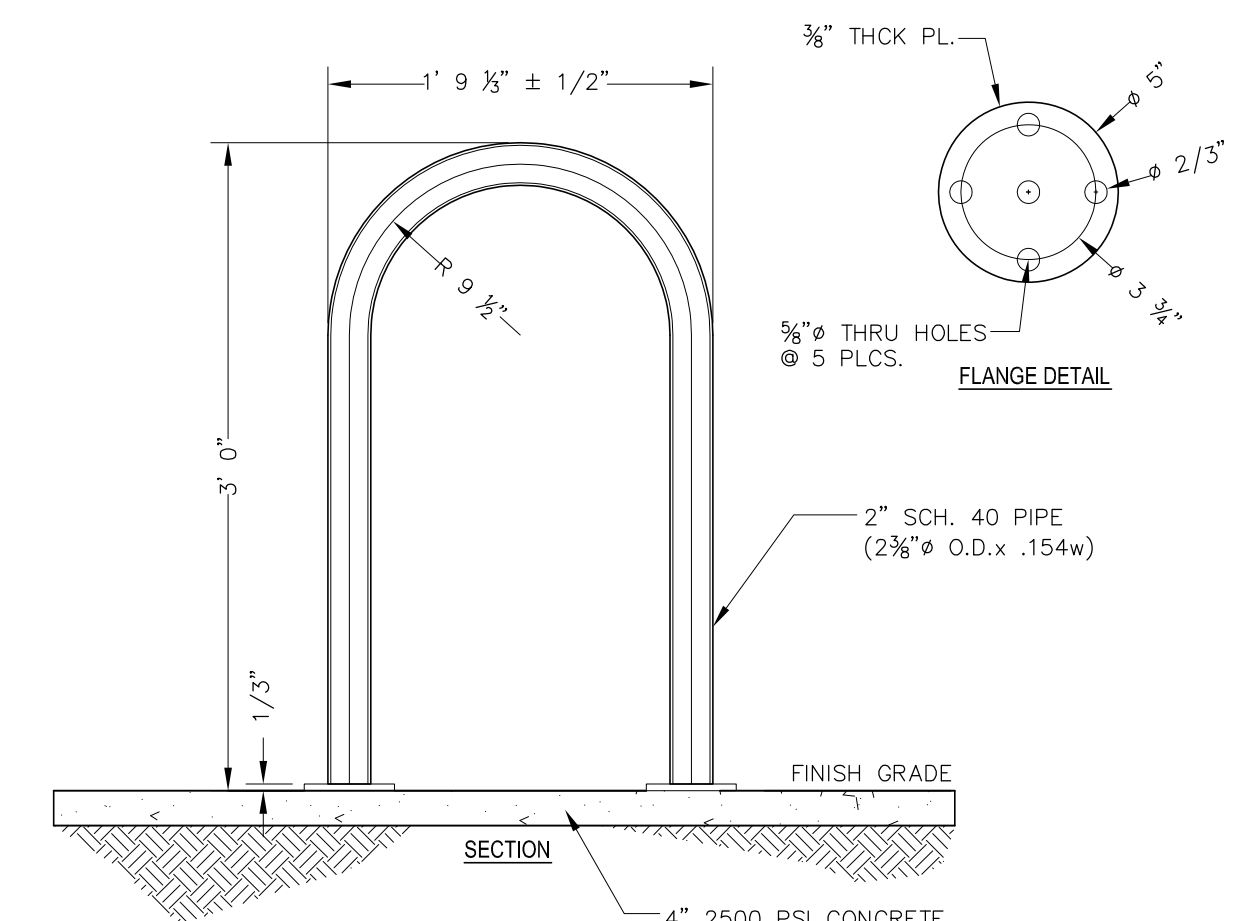
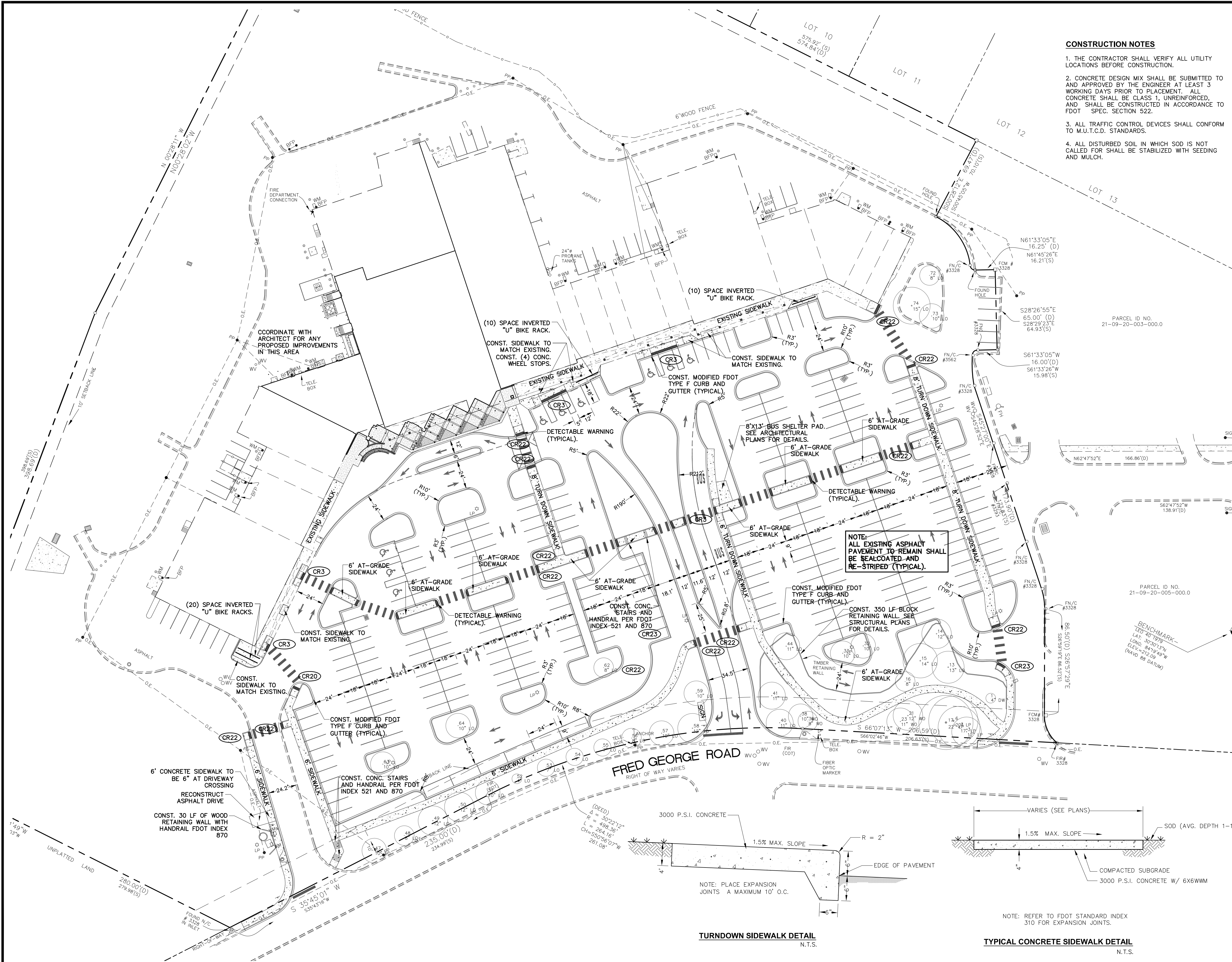
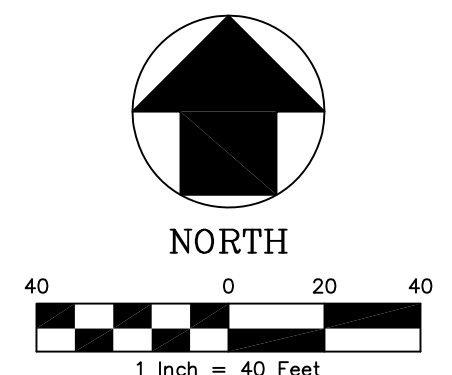
SHEET TITLE
DEMOLITION AND TREE REMOVAL PLAN

SEAL
PROJECT NUMBER: **2735-006**
DATE: **08/29/12**
SHEET NUMBER: **3**
Sean K. Marston, P.E.
License Number 55987

Schedule 17, 2012 (16-56-01 EDITION)
C:\TEMP\ACT\FILES\30980\2735-006 LAYOUT.DWG

CONSTRUCTION NOTES

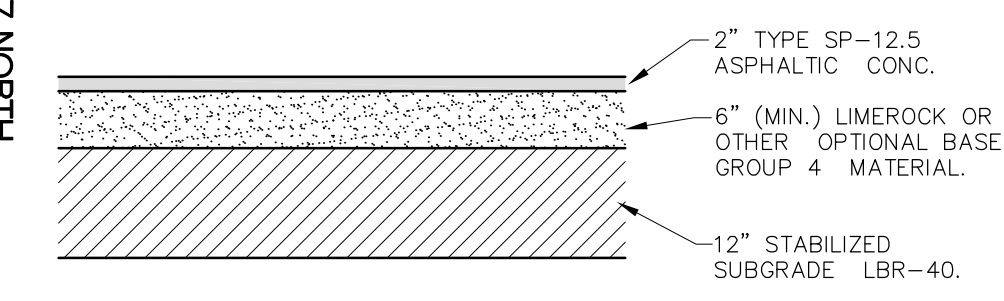
1. THE CONTRACTOR SHALL VERIFY ALL UTILITY LOCATIONS BEFORE CONSTRUCTION.
2. CONCRETE DESIGN MIX SHALL BE SUBMITTED TO AND APPROVED BY THE ENGINEER AT LEAST 3 WORKING DAYS PRIOR TO PLACEMENT. ALL CONCRETE SHALL BE CLASS 1, UNREINFORCED, AND SHALL BE CONSTRUCTED IN ACCORDANCE TO FDOT SPEC. SECTION 522.
3. ALL TRAFFIC CONTROL DEVICES SHALL CONFORM TO M.U.T.C.D. STANDARDS.
4. ALL DISTURBED SOIL IN WHICH SOD IS NOT CALLED FOR SHALL BE STABILIZED WITH SEEDING AND MULCH.



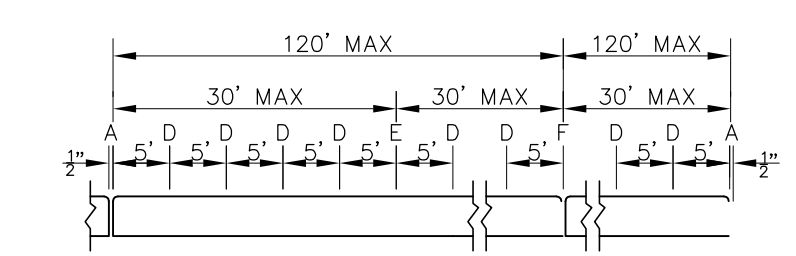
U.S. HIGHWAY No. 27 NORTH (NORTH MONROE ST.)
RIGHT OF WAY VARIES

- NOTES:
1. INSTALLATION TO BE COMPLETED IN ACCORDANCE WITH MANUFACTURER'S SPECIFICATIONS.
2. CONTACT MANUFACTURER FOR CUSTOM COLORS. COLOR TO BE DETERMINED BY OWNER.

INVERTED "U" BIKE RACK DETAIL
N.T.S.



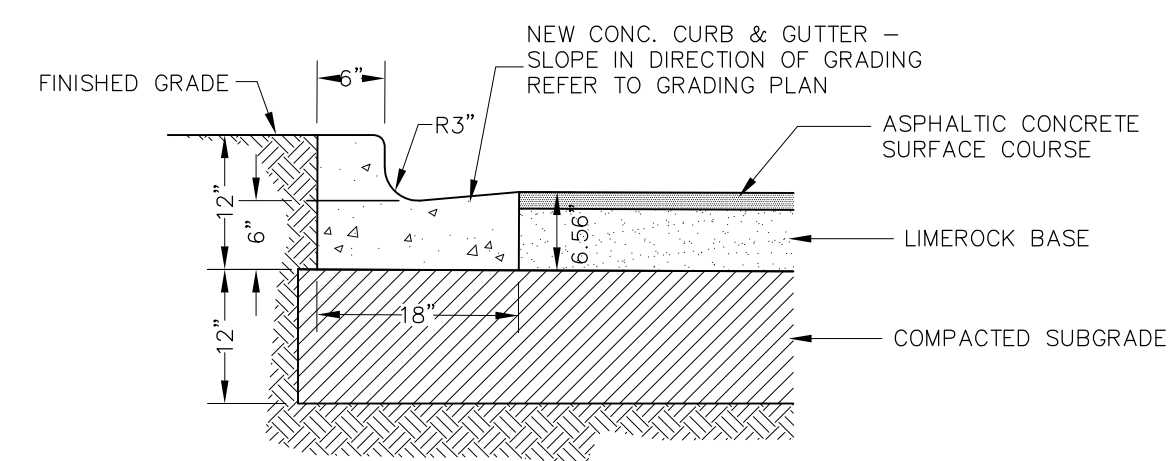
TYPICAL PAVEMENT DETAIL
N.T.S.



- A - 1/2" EXPANSION JOINTS (PREFORMED JOINT FILLER)
D - 1/2" SAW CUT JOINTS, 12" DEEP (96 HOUR) MAX. 5' CENTERS
E - 2" SAW CUT JOINTS, 12" DEEP (12 HOUR) MAX. 30' CENTERS
F - 2" EXPANSION JOINT WHEN RUN OF SIDEWALK EXCEEDS 120'

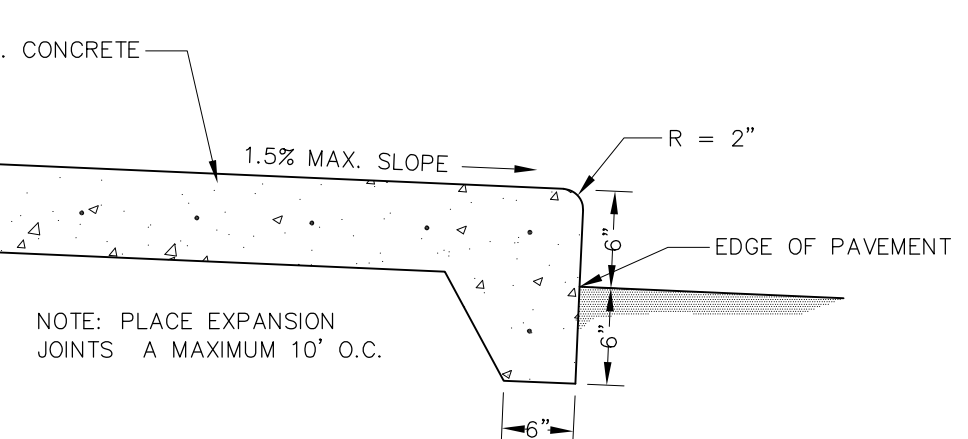
NOTE: DETAIL AS PER FDOT STANDARD INDEX 310

SIDEWALK JOINTS DETAIL
N.T.S.

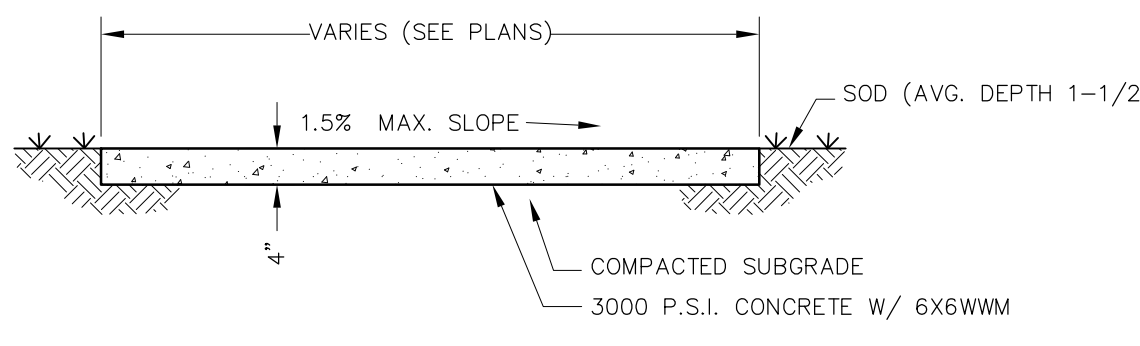


(REFERENCE FDOT STANDARD INDEX 300)

MODIFIED FDOT TYPE "F" CURB & GUTTER
N.T.S.



TURNDOWN SIDEWALK DETAIL
N.T.S.

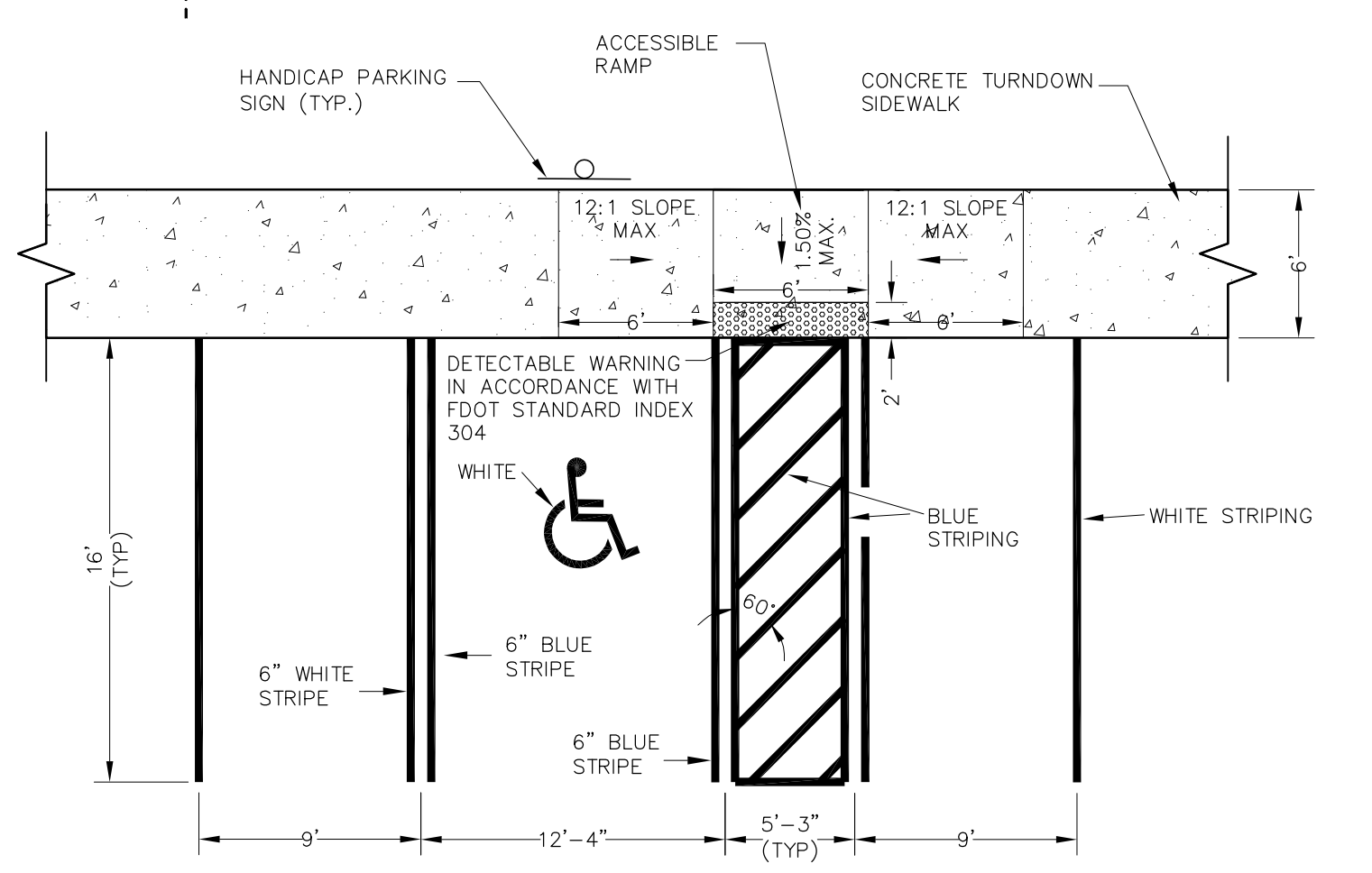
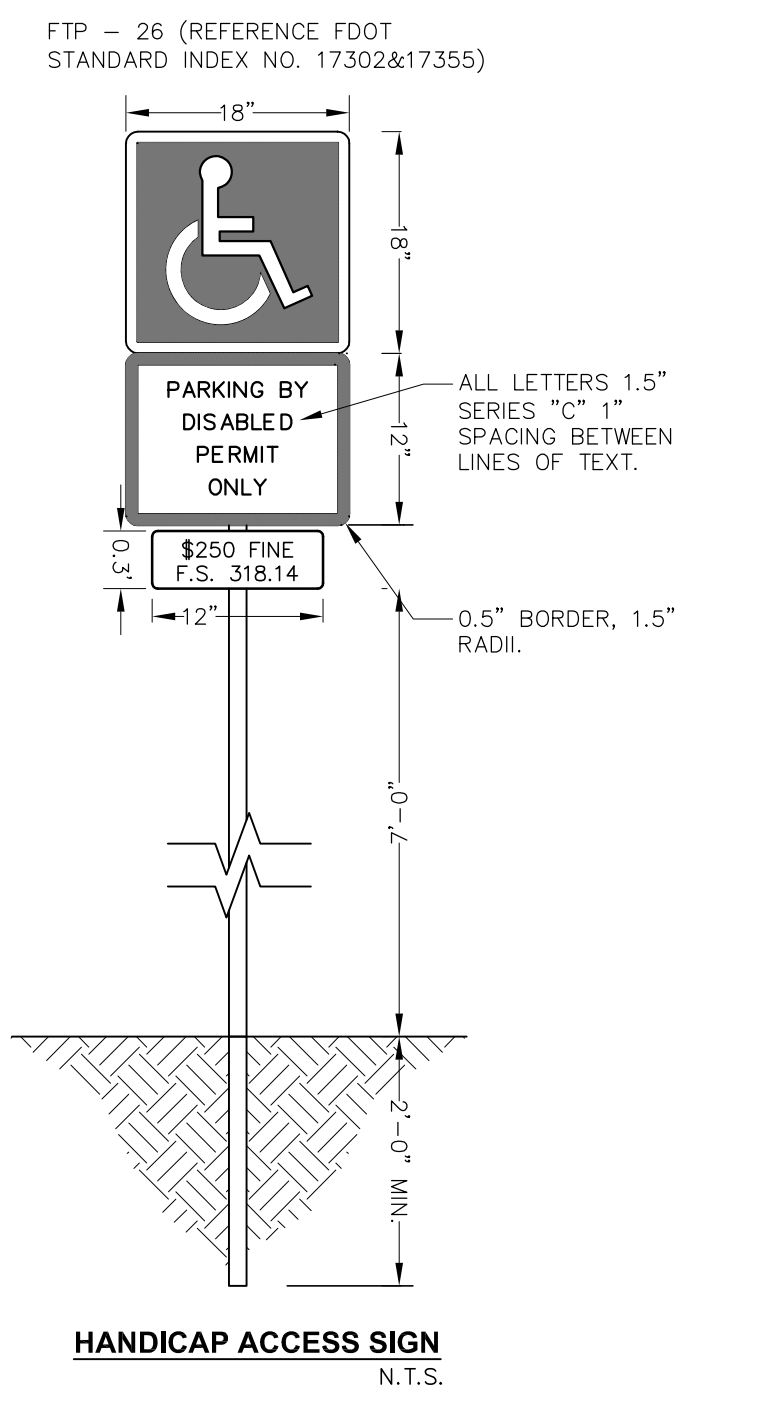
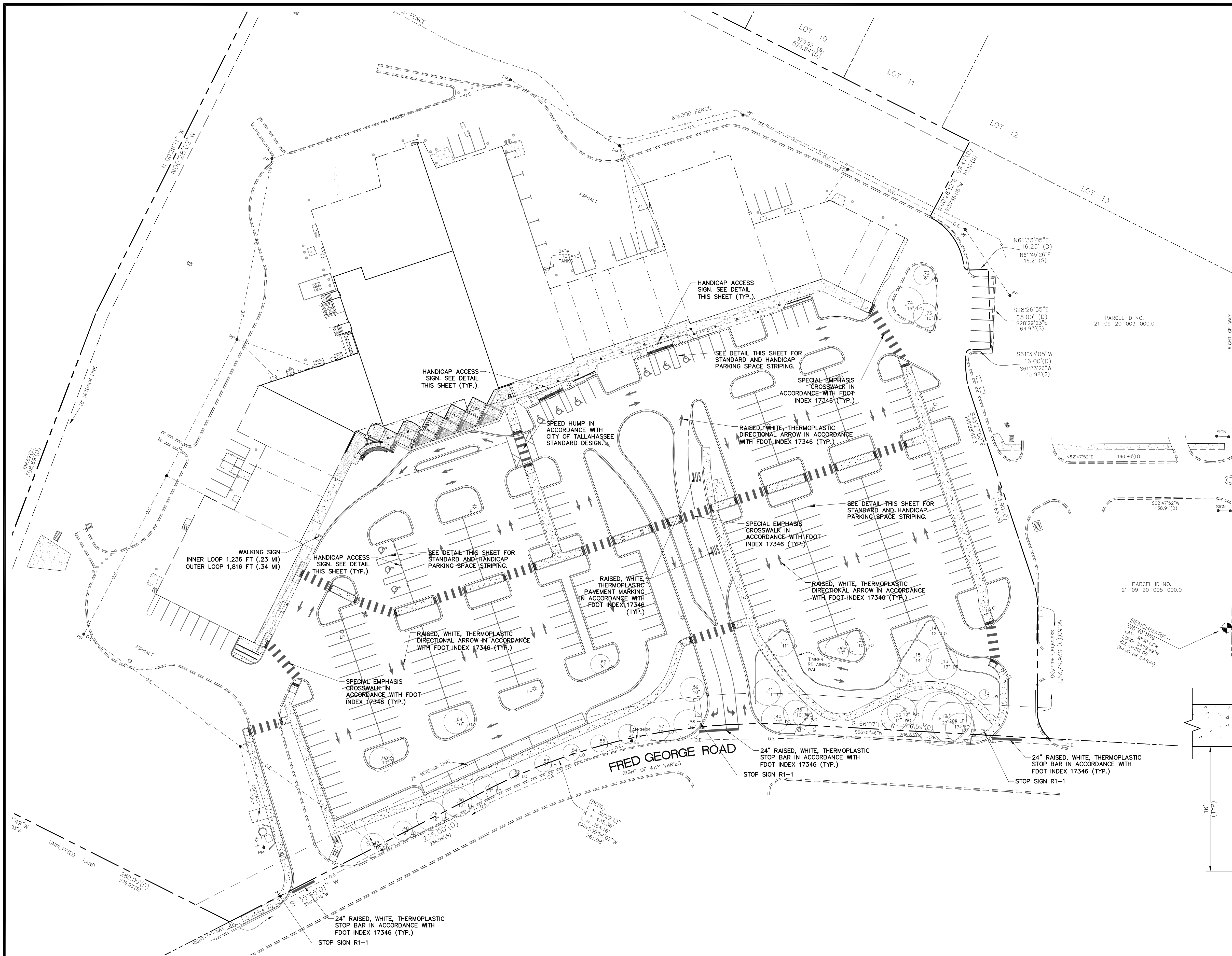
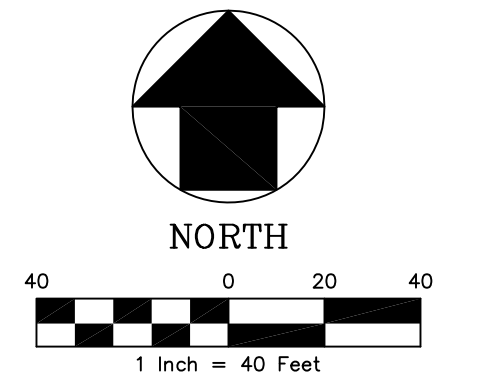


NOTE: REFER TO FDOT STANDARD INDEX 310 FOR EXPANSION JOINTS.

TYPICAL CONCRETE SIDEWALK DETAIL
N.T.S.

S:\Projects\17_2012\16-56-03_EST\CONTEMP\A\FILESET_30980\735-006_LAYOUT.DWG

NO.	DATE	DESCRIPTION	REVISIONS	DESIGNED BY: S.R.W.	<p>GENESIS GROUP FROM VISION TO REALITY GGI, LLC dba GENESIS GROUP 2507 CALLAWAY ROAD, SUITE 100 TALLAHASSEE, FLORIDA 32303 (850) 224-4400 (850) 681-3600 FAX www.GenesisGroup.com</p>	PREPARED FOR: LEON COUNTY FACILITIES MANAGEMENT	PROJECT NAME: HUNTINGTON OAKS SITE REDEVELOPMENT	SHEET TITLE: SITE AND GEOMETRY PLAN	SEAL: Sean K. Marston, P.E. License Number 55987	PROJECT NUMBER: 2735-006	
				DRAWN BY: S.R.W.						DATE: 08/29/12	
						CHECKED BY: S.K.M.					SHEET NUMBER: 5
						SCALE: 1" = 40'					

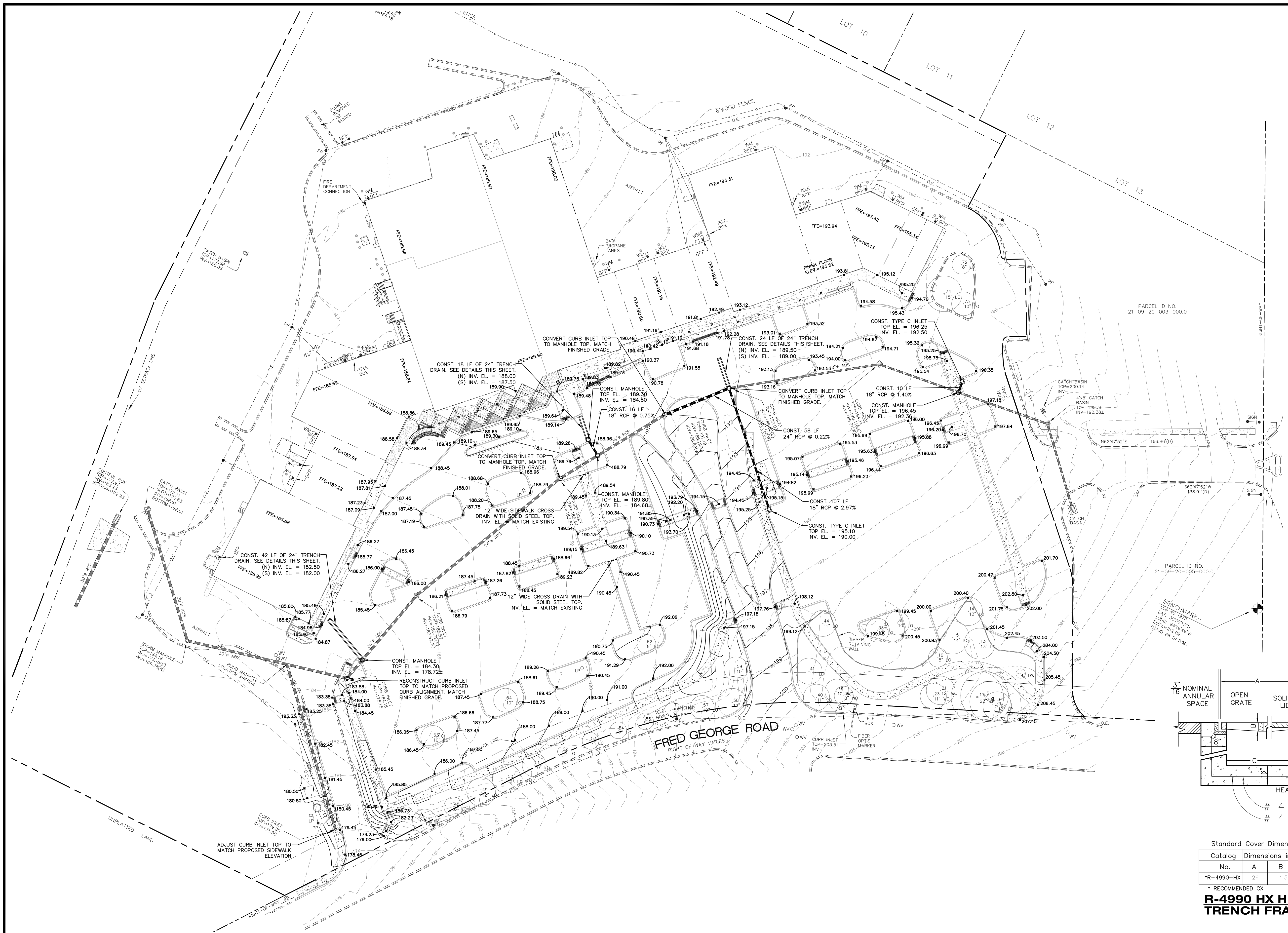
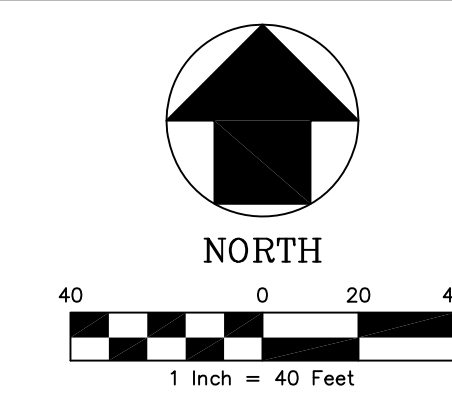


NOTE:
 1. ALL STANDARD SPACES SHALL HAVE WHITE STRIPING.
 2. ALL HANDICAP SPACES SHALL HAVE THERMOPLASTIC STRIPING.

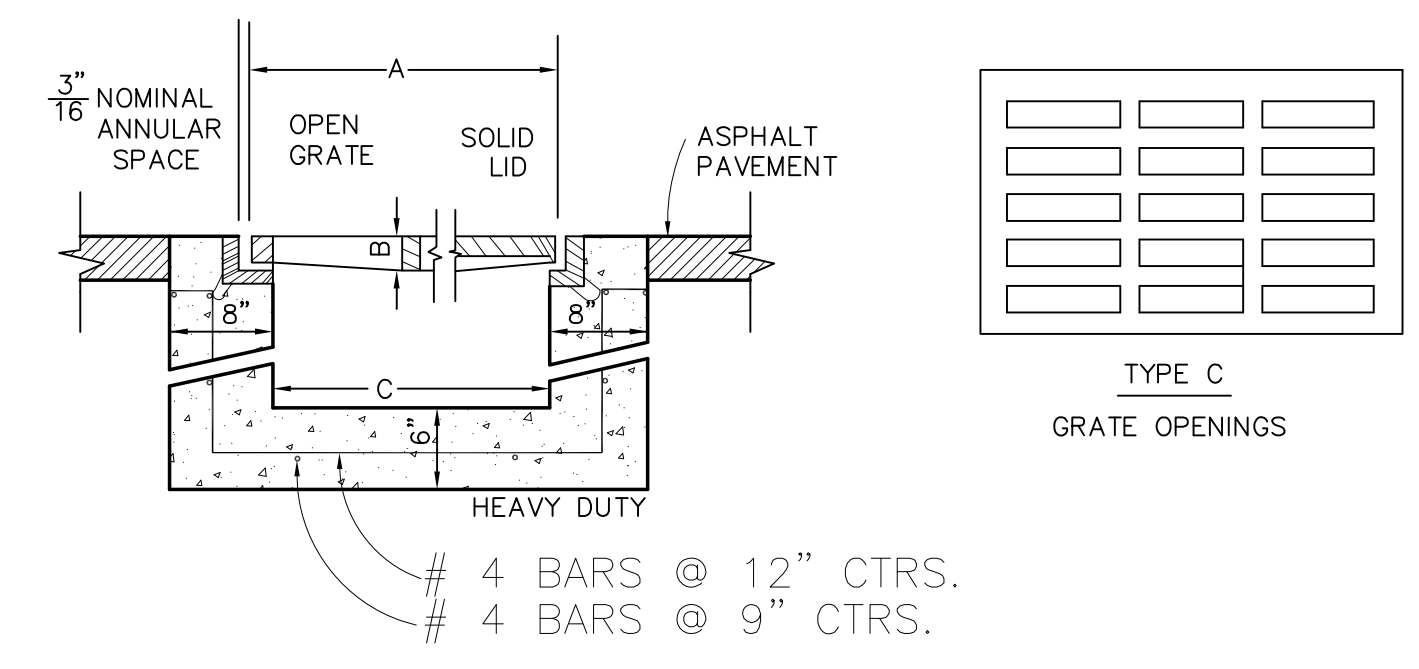
TYPICAL STRIPING AND PARKING DIMENSIONS FOR PERPENDICULAR PARKING
 N.T.S.

Scale: 1" = 40'
 C:\TEMP\AD\FUELSE_30980\2735-006 LAYOUT.DWG
 17:2012 (16:56:03 EST)

<table border="1"> <thead> <tr> <th>NO.</th> <th>DATE</th> <th>DESCRIPTION</th> <th>REVISIONS</th> </tr> </thead> <tbody> <tr> <td> </td> <td> </td> <td> </td> <td> </td> </tr> <tr> <td> </td> <td> </td> <td> </td> <td> </td> </tr> <tr> <td> </td> <td> </td> <td> </td> <td> </td> </tr> </tbody> </table>	NO.	DATE	DESCRIPTION	REVISIONS													DESIGNED BY: S.R.W. DRAWN BY: S.R.W. CHECKED BY: S.K.M. SCALE: 1" = 40'	 GENESIS GROUP FROM VISION TO REALITY GGI, LLC dba GENESIS GROUP 2507 CALLAWAY ROAD, SUITE 100 TALLAHASSEE, FLORIDA 32303 FL CA 00009660 FL LB 0006816 FL LC 26000202 (850) 224-4400 (850) 681-3600 FAX www.GenesisGroup.com	 PREPARED FOR LEON COUNTY FACILITIES MANAGEMENT	PROJECT NAME HUNTINGTON OAKS SITE REDEVELOPMENT	SHEET TITLE TRAFFIC CIRCULATION PLAN	SEAL Sean K. Marston, P.E. License Number 55987	PROJECT NUMBER 2735-006 DATE 08/29/12 SHEET NUMBER 6
	NO.	DATE	DESCRIPTION	REVISIONS																			



U.S. HIGHWAY No. 27 NORTH
(NORTH MONROE ST.)
RIGHT OF WAY VARIES



Standard Cover Dimensions

Catalog No.	Dimensions in inches			Weight per linear foot (without frame)					
	A	B	C	Type A	Type C	Type D	Type E	Type F	Frame
R-4990-HX	26	1.5	24	71	100	85	-	-	12

* RECOMMENDED CX

R-4990 HX HEAVY DUTY TRENCH FRAMES WITH GRATED COVERS
N.T.S.

Scale: 1" = 40'
 Date: 08/29/12
 Project: HUNTINGTON OAKS SITE REDEVELOPMENT

No.	DATE	DESCRIPTION	REVISIONS

DESIGNED BY: **S.R.W.**
 DRAWN BY: **S.R.W.**
 CHECKED BY: **S.K.M.**
 SCALE: **1" = 40'**



GENESIS GROUP
 FROM VISION TO REALITY
 GGI, LLC dba GENESIS GROUP
 2507 CALLAWAY ROAD, SUITE 100
 TALLAHASSEE, FLORIDA 32303

FL CA 00009660
 FL LB 0006816
 FL LC 26000202
 (850) 224-4400 (850) 681-3600 FAX
 www.GenesisGroup.com

PREPARED FOR

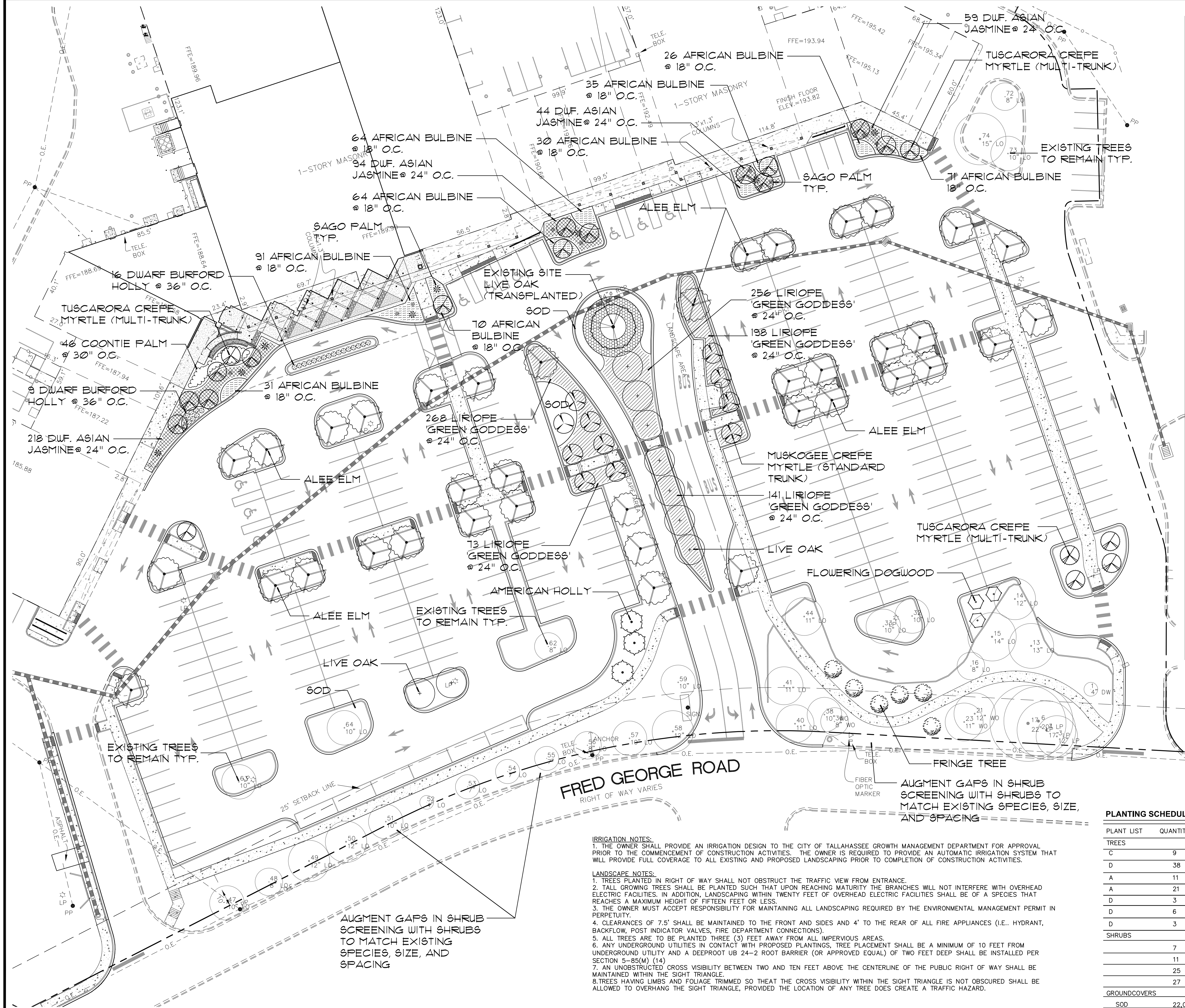
LEON COUNTY FACILITIES MANAGEMENT

PROJECT NAME
HUNTINGTON OAKS SITE REDEVELOPMENT

SHEET TITLE
GRADING AND DRAINAGE PLAN

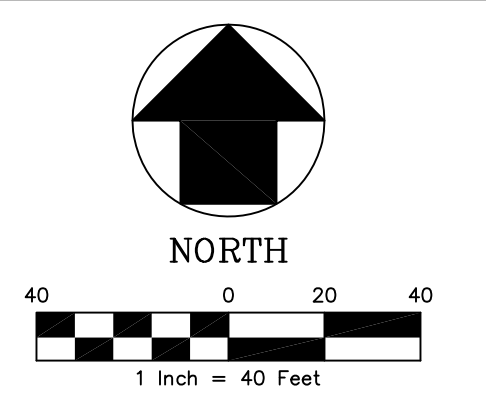
SEAL
 Sean K. Marston, P.E.
 License Number 55987

PROJECT NUMBER
2735-006
 DATE
08/29/12
 SHEET NUMBER
7



LEGEND

- TRANSPLANTED LIVE OAK
- ALLEE ELM
- LIVE OAK
- AMERICAN HOLLY
- FRINGE TREE
- DOGWOOD
- MUSKOGEE CREPE MYRTLE (STANDARD TRUNK)
- TUSCARORA CREPE MYRTLE (MULTI-TRUNK)
- SAGO PALM
- DRAWF BURFORD HOLLY
- COONTIE PALM
- DRAFF ASIAN JASMINE
- AFRICAN BULBINE
- LIRIOPE 'GREEN GODDESS'
- SOD
- ANNUALS



U. S. HIGHWAY No. 27 NORTH
 (NORTH MONROE ST.)
 RIGHT OF WAY VARIES

PLANTING CREDITS

32 3" CAL. TREES AT 1 CREDIT EA. (PLANT LIST A)	= 32 CREDITS
9 3" CAL. TREES AT 5 CREDIT EA. (PLANT LIST C)	= 45 CREDITS
50 2"-3" CAL. TREES AT 6 CREDIT EA. (PLANT LIST D)	= 300 CREDITS
	= 377 TOTAL PLANTING CREDITS

CREDIT/DEBIT SUMMARY

PRESERVATION CREDITS	= 268 TOTAL CREDITS
PLANTING CREDITS	= 377 TOTAL CREDITS
	= 645 TOTAL CREDITS
REMOVAL DEBITS	= 250 TOTAL DEBITS

TOTAL DEVELOPED AREA = 11.54 AC.
 REQUIRED TREE REFORESTATION CREDIT RATIO = 40.00 CREDITS/AC.
 PROVIDED TREE REFORESTATION CREDIT RATIO = 55.89 CREDITS/AC.

PLANTING SCHEDULE

PLANT LIST	QUANTITY	COMMON NAME	BOTANICAL NOMENCLATURE	SIZE / SPACING
TREES				
C	9	LIVE OAK	<i>Quercus virginiana</i>	3" caliper, 12'-14' min. ht., spaced as shown.
D	38	ALLEE ELM	<i>Ulmus parvifolia 'Emer II'</i>	3" caliper, 11'-13' min. ht., spaced as shown.
A	11	MUSKOGEE CRAPE MYRTLE	<i>Lagerstroemia x faurei 'Muskogee'</i>	Multi-trunk 1-3/4" cal. min., 12'-13' min. ht., spaced as shown.
A	21	TUSCARORA CRAPE MYRTLE	<i>Lagerstroemia x faurei 'Tuscarora'</i>	Multi-trunk 1-1/2" cal. min., 9'-10' min. ht., spaced as shown.
D	3	AMERICAN HOLLY	<i>Ilex opaca</i>	3" caliper, 11'-12' min. ht., spaced as shown.
D	6	FRINGE TREE	<i>Chionanthus virginicus</i>	2" caliper, 8'-9' min. ht., spaced as shown.
D	3	FLOWERING DOGWOOD	<i>Cornus florida</i>	2" caliper, 8'-9' min. ht., spaced as shown.
SHRUBS				
	7	SAGO PALM	<i>Cycas revoluta</i>	20-24" min. ht., 24" min. sprd., min. spaced as shown
	11	SAGO PALM	<i>Cycas revoluta</i>	15-20" min. ht., 20" min. sprd., min. spaced as shown
	25	DWARF BURFORD HOLLY	<i>Ilex cornuta 'Dwarf Burford'</i>	24-30" min. ht., 30" min. sprd., min. spaced as shown
	27	NEEDLEPOINT HOLLY	<i>Ilex cornuta 'Carissa'</i>	18-20" min. ht., 15-18" min. sprd., spaced 36" O.C.
GROUNDCOVERS				
SOD	22,049 sf	CENTPEDE	<i>Eremochloa ophiuroides</i>	Lay solidly in all indicated areas.

IRRIGATION NOTES:
 1. THE OWNER SHALL PROVIDE AN IRRIGATION DESIGN TO THE CITY OF TALLAHASSEE GROWTH MANAGEMENT DEPARTMENT FOR APPROVAL PRIOR TO THE COMMENCEMENT OF CONSTRUCTION ACTIVITIES. THE OWNER IS REQUIRED TO PROVIDE AN AUTOMATIC IRRIGATION SYSTEM THAT WILL PROVIDE FULL COVERAGE TO ALL EXISTING AND PROPOSED LANDSCAPING PRIOR TO COMPLETION OF CONSTRUCTION ACTIVITIES.

LANDSCAPE NOTES:
 1. TREES PLANTED IN RIGHT OF WAY SHALL NOT OBSTRUCT THE TRAFFIC VIEW FROM ENTRANCE.
 2. TALL GROWING TREES SHALL BE PLANTED SUCH THAT UPON REACHING MATURITY THE BRANCHES WILL NOT INTERFERE WITH OVERHEAD ELECTRIC FACILITIES. IN ADDITION, LANDSCAPING WITHIN TWENTY FEET OF OVERHEAD ELECTRIC FACILITIES SHALL BE OF A SPECIES THAT REACHES A MAXIMUM HEIGHT OF FIFTEEN FEET OR LESS.
 3. THE OWNER MUST ACCEPT RESPONSIBILITY FOR MAINTAINING ALL LANDSCAPING REQUIRED BY THE ENVIRONMENTAL MANAGEMENT PERMIT IN PERPETUITY.
 4. CLEARANCES OF 7.5' SHALL BE MAINTAINED TO THE FRONT AND SIDES AND 4' TO THE REAR OF ALL FIRE APPLIANCES (I.E., HYDRANT, BACKFLOW, POST INDICATOR VALVES, FIRE DEPARTMENT CONNECTIONS).
 5. ALL TREES ARE TO BE PLANTED THREE (3) FEET AWAY FROM ALL IMPERVIOUS AREAS.
 6. ANY UNDERGROUND UTILITIES IN CONTACT WITH PROPOSED PLANTINGS, TREE PLACEMENT SHALL BE A MINIMUM OF 10 FEET FROM UNDERGROUND UTILITY AND A DEEPROOT UB 24-2 ROOT BARRIER (OR APPROVED EQUAL) OF TWO FEET DEEP SHALL BE INSTALLED PER SECTION 5-85(M) (14).
 7. AN UNOBSTRUCTED CROSS VISIBILITY BETWEEN TWO AND TEN FEET ABOVE THE CENTERLINE OF THE PUBLIC RIGHT OF WAY SHALL BE MAINTAINED WITHIN THE SIGHT TRIANGLE.
 8. TREES HAVING LIMBS AND FOLIAGE TRIMMED SO THAT THE CROSS VISIBILITY WITHIN THE SIGHT TRIANGLE IS NOT OBSCURED SHALL BE ALLOWED TO OVERHANG THE SIGHT TRIANGLE, PROVIDED THE LOCATION OF ANY TREE DOES NOT CREATE A TRAFFIC HAZARD.

AUGMENT GAPS IN SHRUB SCREENING WITH SHRUBS TO MATCH EXISTING SPECIES, SIZE, AND SPACING

September 17, 2019 (16:30:11 EST)
 G:\2735\000A\01\CADD\SUBMITTALS\EMP\2735-008_LAYOUT (LANDSCAPE).DWG

DESIGNED BY: S.R.W. DRAWN BY: S.R.W. CHECKED BY: S.K.M. SCALE: 1" = 40'	<p>GENESIS GROUP <small>FROM VISION TO REALITY</small> GGI, LLC dba GENESIS GROUP 2507 CALLAWAY ROAD, SUITE 100 TALLAHASSEE, FLORIDA 32303 (850) 224-4400 (850) 681-3600 FAX www.GenesisGroup.com</p>	PREPARED FOR <p>LEON COUNTY FACILITIES MANAGEMENT</p>	PROJECT NAME <p>HUNTINGTON OAKS SITE REDEVELOPMENT</p>	SHEET TITLE <p>LANDSCAPE PLAN</p>	SEAL Joseph C. Petrich	PROJECT NUMBER 2735-006 DATE 08/28/12 SHEET NUMBER 8
--	--	---	--	---	---------------------------	--